

ultimate traffic **Live**
Installation Guide

Welcome to *ultimate traffic Live*.

This guide will walk you through the process of installation and initial setup of **utLive**. You must run the user interface and complete setup prior to using **utLive** in your flight simulator.

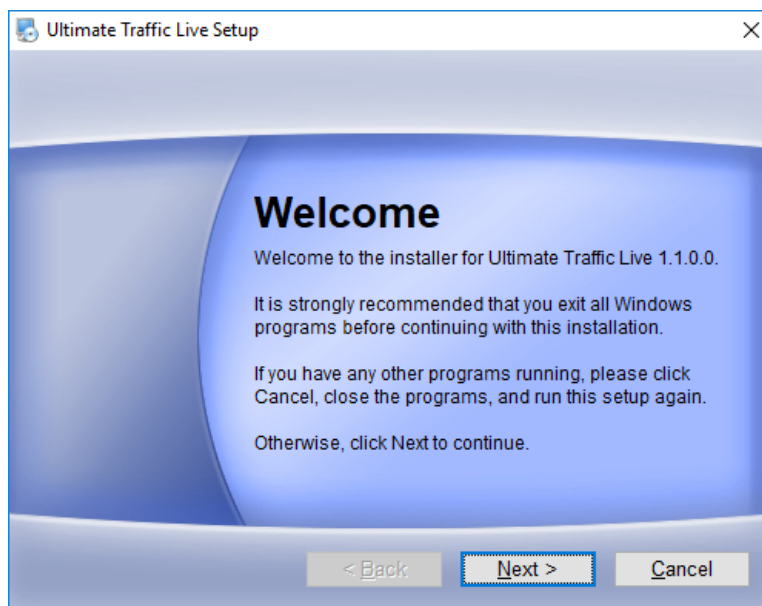
- If you are reinstalling **utLive** a special section is included at the end of this guide that needs to be completed BEFORE you follow these steps.

Step 1 – Run the Flight One E-Commerce file you have downloaded

Run the file you have downloaded from the Flight One Software website. Enter your purchase or reinstall information and allow the file to launch the **utLive** Installer.

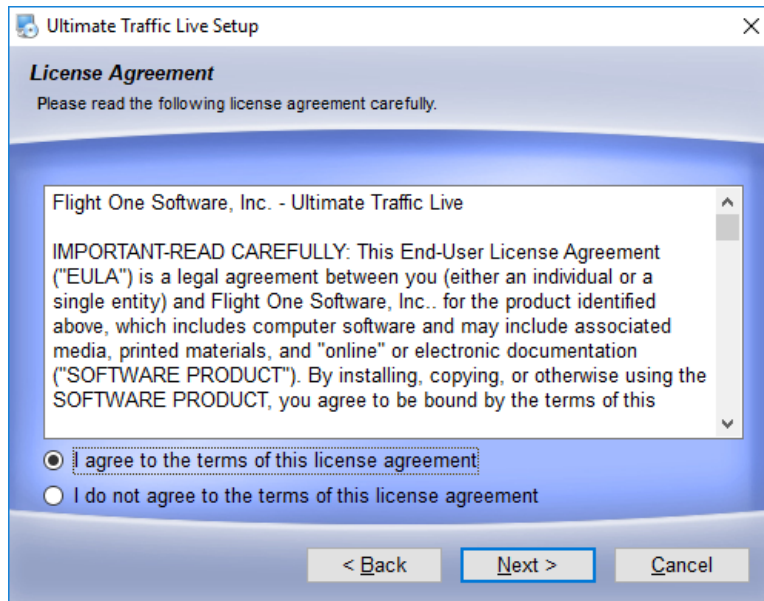
Step 2 – Begin the installation process

When the installer has been launched, you will see the screen below. If you are ready to begin installing, press the **NEXT** button.



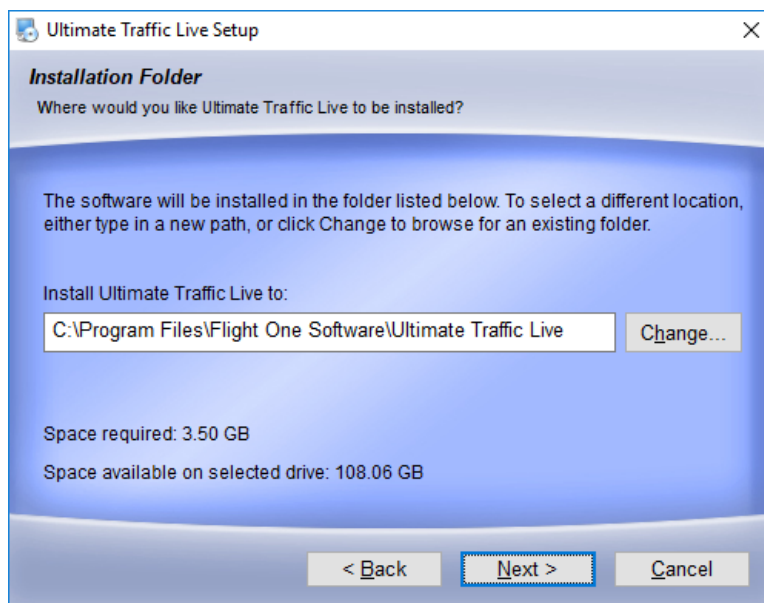
Step 3 – License Agreement

Before you can continue the installation, you must agree to the standard Flight One software license agreement. Select the 'I agree' option at the bottom of the screen, then press **NEXT**.



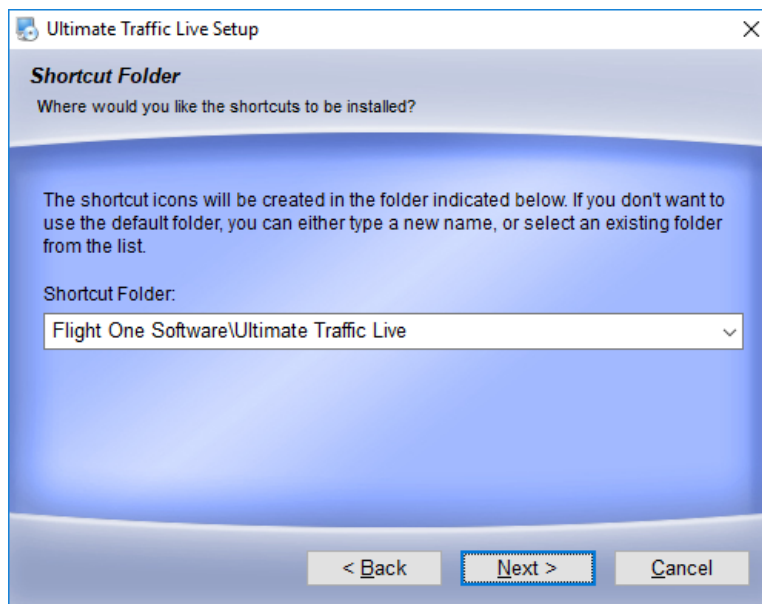
Step 4 – Select Installation Folder

You can designate where you would like **utLive** installed. The default path will be **C:\Program Files\Flight One Software\Ultimate Traffic Live**, use this path unless you desire a different location.



Step 5 – Select Shortcuts Folder

If desired, change where the program shortcuts are installed, using this screen.

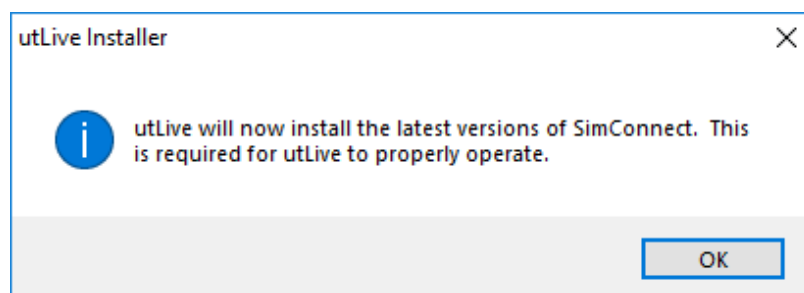


Step 6 – Allow Files to be Installed

After the installer displays the options you have selected and you press **Next**, files will be installed onto your system. This process may take a few minutes or more, depending on your computer system speed.

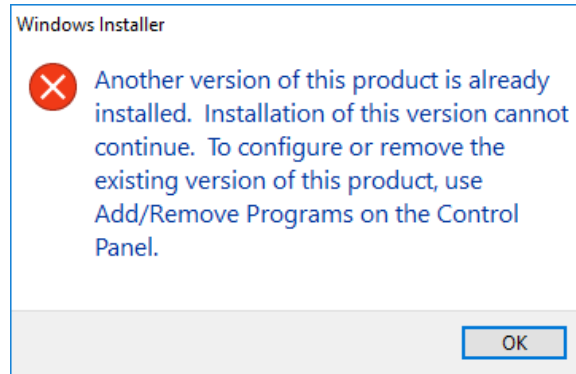
Step 7 – Install SimConnect

utLive requires SimConnect to communicate to your flight simulator. The installer has included up to date versions of the different SimConnects that are currently available.



Once all files have been installed, a message about SimConnect installation will be displayed. Press the **OK** button to begin installation of SimConnect.

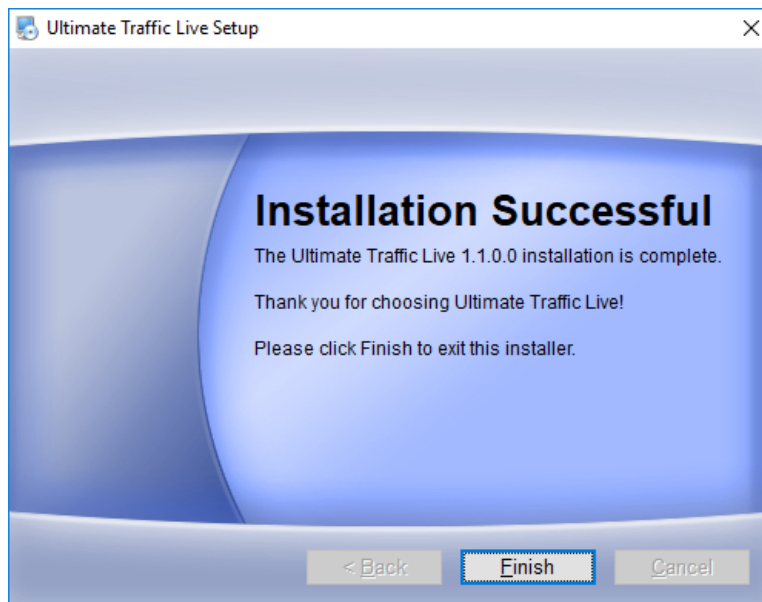
If you already have SimConnect installed, Windows will display the following information message. Just press **OK** and continue the installation.



Step 8 – File Installation Complete

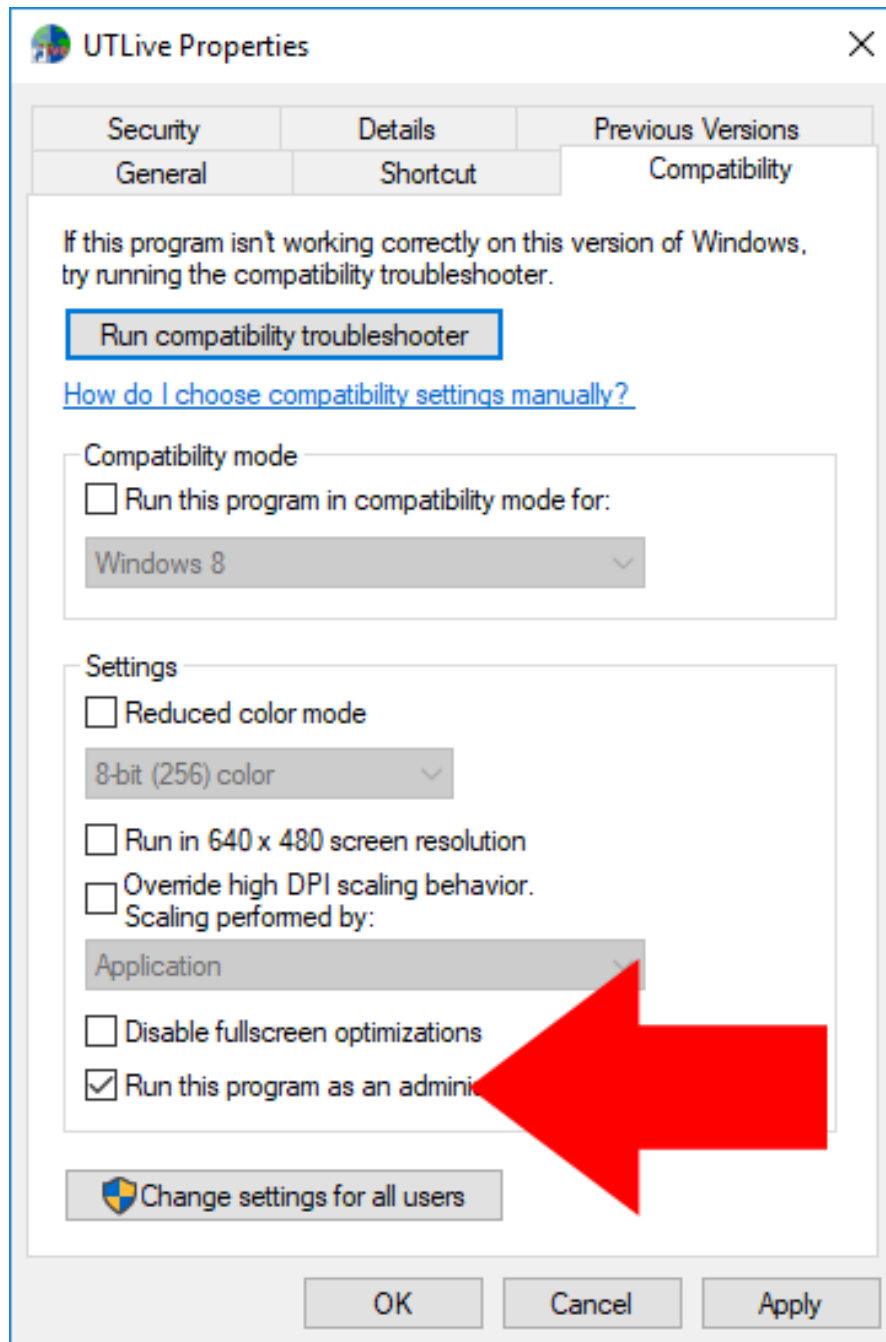
Once all files and SimConnect have been installed, the installer will let you know that installation is complete.

**DO NOT RUN YOUR FLIGHT SIMULATOR YET
SETUP IS NOT COMPLETE!**



Step 9 – Set User Interface to run as Administrator

To make sure that **utLive** will not have a problem configuring AI traffic for your simulator, you must set **utLive** to be run as an administrator. This will allow **utLive** to make changes to settings and options within your flight simulator.



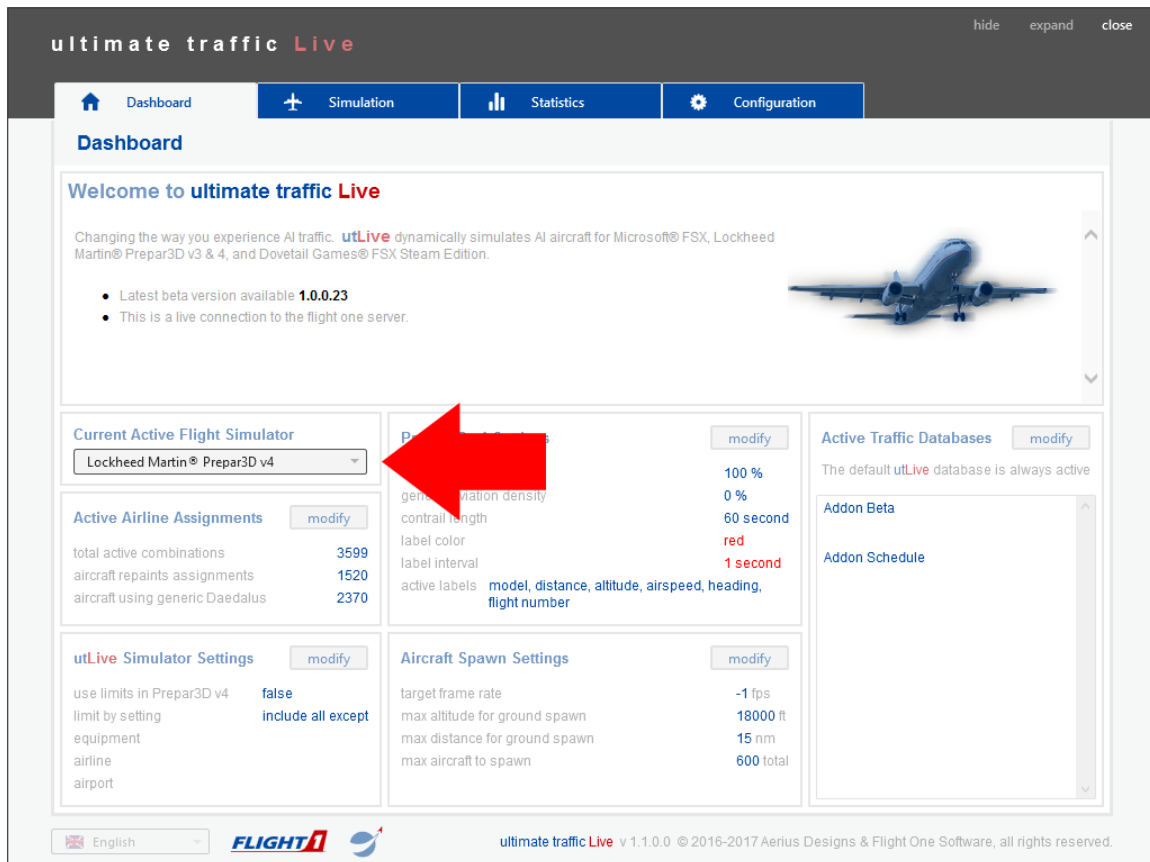
Locate the **utLive** icon on your desktop, right-click on it and select Properties. Check 'Run this program as an administrator' then finally press the **APPLY** button.

Step 10 - Launch the *ultimate traffic Live* user interface

The final step to setup *utLive* is to launch the user interface and verify your flight simulator settings.

Step 11 – Verify the Active Simulator

Select which flight simulator you would like to use with *utLive*. Available simulators will be displayed in a drop down list.



The screenshot shows the 'ultimate traffic Live' user interface. At the top, there are navigation tabs: Dashboard, Simulation, Statistics, and Configuration. The 'Configuration' tab is selected. Below the navigation, there is a 'Dashboard' section with a welcome message and a list of features. A red arrow points to the 'Current Active Flight Simulator' dropdown menu, which is currently set to 'Lockheed Martin® Prepar3D v4'. Other settings visible include 'Active Airline Assignments', 'Active Traffic Databases', 'utLive Simulator Settings', and 'Aircraft Spawn Settings'. The footer contains the Flight One Software logo and copyright information.

If you can not see your simulator, proceed to step 11a, otherwise your installation and setup is now complete. You can use your selected flight simulator and see the *utLive* aircraft traffic.

For further information about settings and options for *utLive* and instructions in use of the user interface please see the User Guide available from the **Flight One** website.

Step 11a – Select the correct paths for your desired simulators

Navigate to the flight simulator **installs** settings page in the user interface.

- Select the **Configuration** Tab
- Select the **Installs** Section

The screenshot shows the 'ultimate traffic Live' Configuration - installs page. The 'Flight Simulator Selection' dropdown is set to 'Lockheed Martin® Prepar3D v4'. The page lists four simulator configurations:

- Microsoft® FSX**: Directory settings for Microsoft® FSX and associated aircraft. 'aircraft available' count is 0.
- Lockheed Martin® Prepar3D v3**: Directory settings for Lockheed Martin® Prepar3D v3 and associated aircraft. 'aircraft available' count is 1226.
- Lockheed Martin® Prepar3D v4**: Directory settings for Lockheed Martin® Prepar3D v4 and associated aircraft. 'aircraft available' count is 1214.
- Dovetail Games® FSX Steam Edition**: Directory settings for Dovetail Games® FSX Steam Edition and associated aircraft. 'aircraft available' count is 1223.

Each configuration has 'set' and 'change' buttons for 'main directory' and 'cfg file'. A 'Save Settings' button is located at the bottom right. Red arrows in the image point to the dropdown menu, the 'set' button for Microsoft® FSX, and the 'Save Settings' button.

On this page, the installation and configurations paths for your flight simulators will be displayed. These values are read from your computer on initial startup of **utLive**, if they are not correct, you can use the **CHANGE** and **SET** buttons to navigate to the correct locations.

- You will be able to verify that you have selected the correct locations by the aircraft available number. When that value changes from 0, you know you have correctly set the location.

Once you have set the correct paths for your simulators, **SAVE** your settings using the button on the bottom of the page. Finally, select your flight simulator you would like to use with **utLive**. You can make this selection using the list at the top of the page. Now your installation and setup is complete.

For further information about settings and options for **utLive** and instructions in use of the user interface please see the User Guide available from the **Flight One** website.

Reinstall Instructions

If you find yourself needing to reinstall **utLive**, you will need to remove any previous versions.

Before you uninstall a previous version, decide if you want to keep custom repaint assignments you might have made. If you want to keep previous assignments, you will need to make a backup of your repaints.xml file. It can be found in the directory listed below.

C:\Users\username\AppData\Roaming\Flight One Software\utLive\Data

Now you can unistall. Since **utLive** can be highly modified, it is likely some files will not be cleaned up by the uninstaller, you need to make sure to clean any files left behind.

- Many users like to use a free utility, that can be found online, named CCleaner. You can run this after the uninstallation to verify all left over files are removed.

You are ready for the install process. Proceed to **Step 1**.